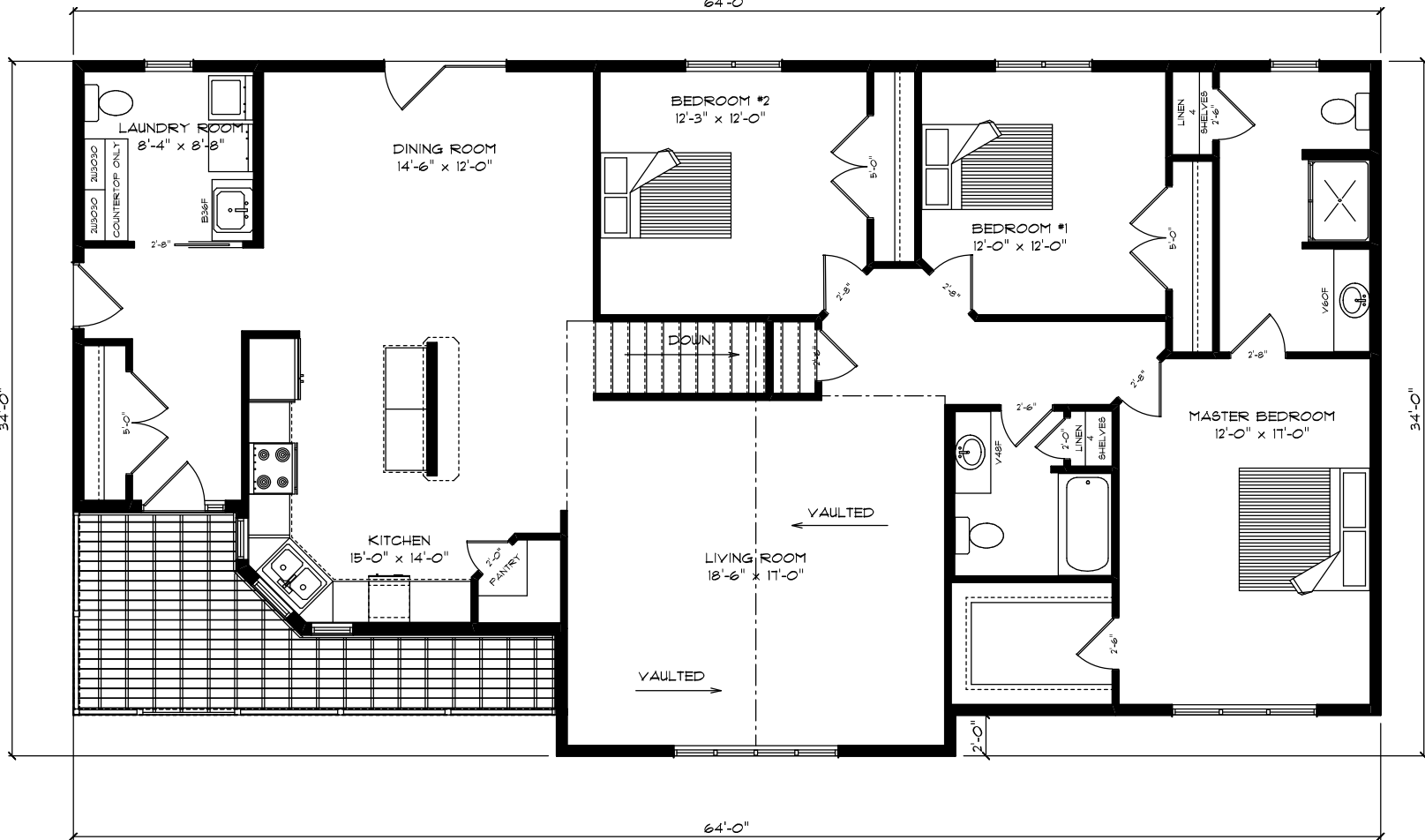


64'-0"



64'-0"

HOUSE - 1,940 SQ.FT.

FLOOR PLAN #1003		
SCALE 1/4"=1'-0"	DRAWN FOR:	DRAWN BY: DAN HOLLINGSWORTH
DATE MAY 12, 2009		REVISED
 CENTRAL CITY LUMBER, INC. 1095 5TH AVE. NORTH CARRINGTON ND 58421		HOUSE - BASEMENT - GARAGE -
PHONE: (701)652-3101	FAX: (701)652-2890	SHEET NUMBER X-X