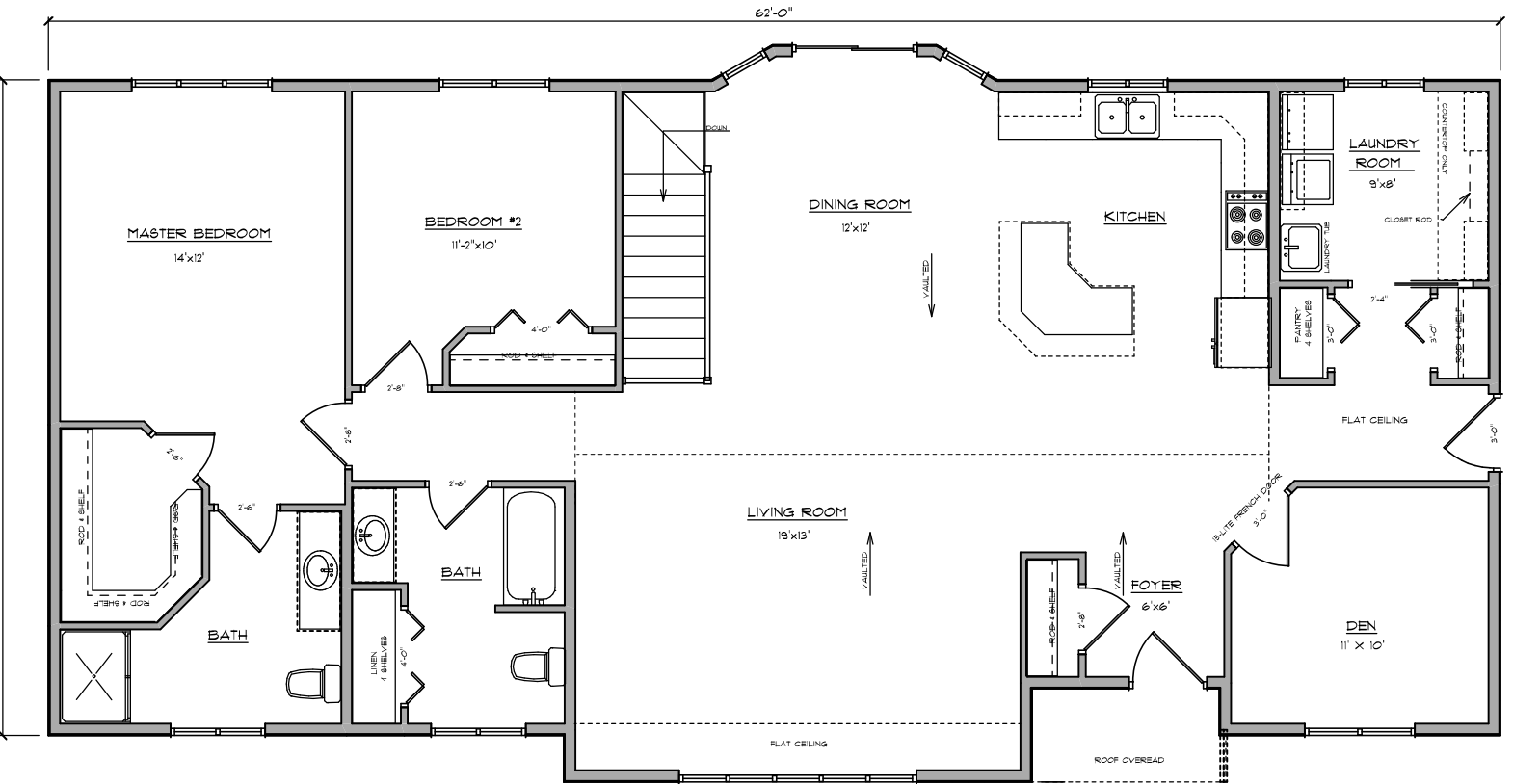


FRONT ELEVATION



HOUSE - 1,190 SQ.FT.

| FLOOR PLAN #1007 | | |
|--|--------------|---|
| SCALE | 1/4"=1'-0" | DRAWN FOR: |
| DATE | May 13, 2008 | DRAWN BY |
| | | DAN HOLLINGSWORTH |
| | | REVISED |
| | | DRAWING NUMBER |
| | | XX |
|  CENTRAL CITY LUMBER INC. 1095 5TH AVE. NORTH CARRINGTON ND 58421 | | PHONE: (701)652-301 FAX: (701)652-2890 |