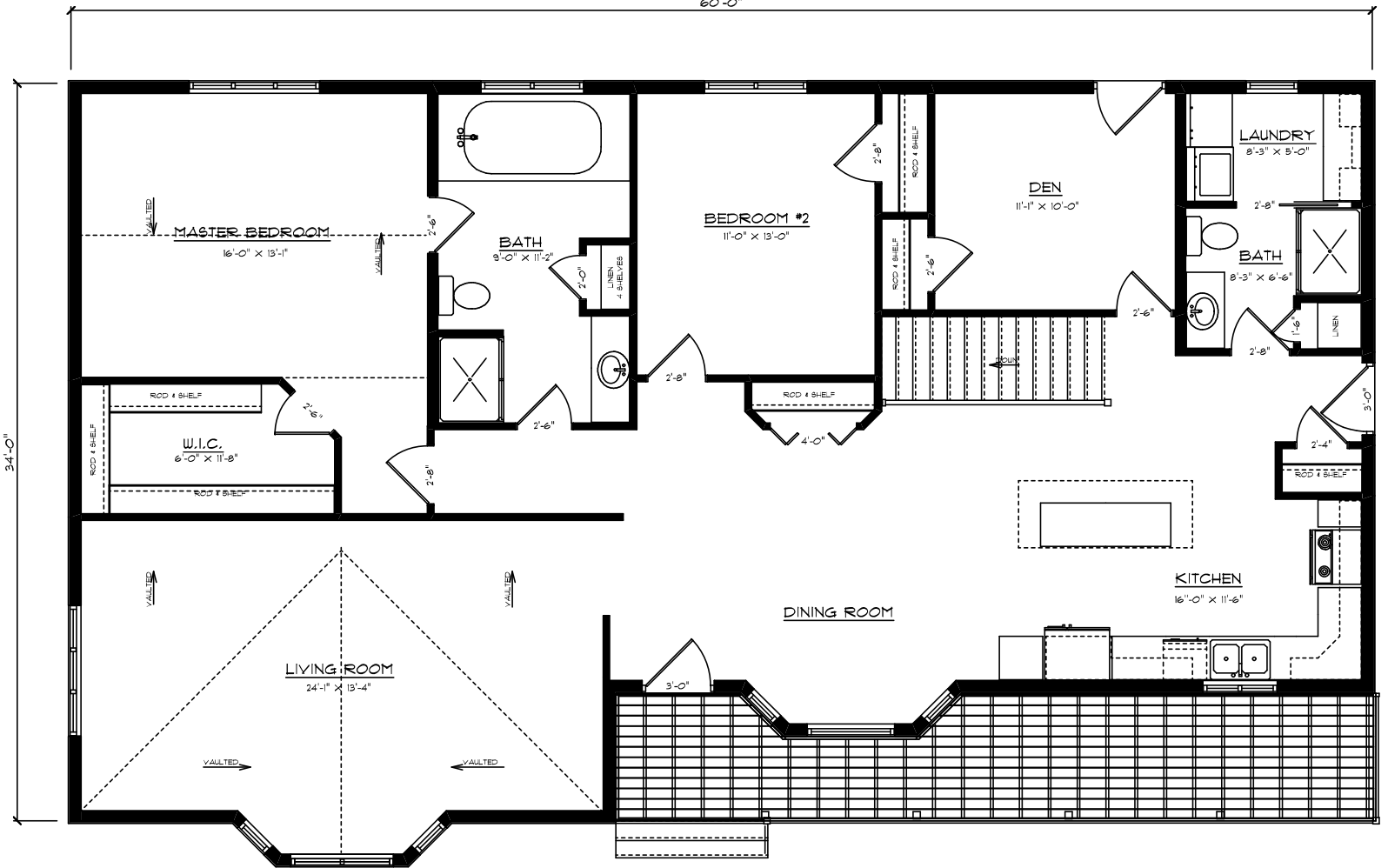




FRONT ELEVATION

60'-0"



FLOOR PLAN #1008

SCALE 1/4"=1'-0"	DRAWN FOR:	DRAWN BY DAN HOLLINGSWORTH
DATE MAY 12, 2009		REVISED
 CENTRAL CITY LUMBER, INC. 1095 5TH AVE. NORTH CARRINGTON, ND 58421		DRAWING NUMBER X-X
PHONE: (701)652-3101		FAX: (701)652-2890

HOUSE - 1,890 SQ.FT.